

MONTHLY



# MURRAY RIDGE COURIER

## April is Autism Acceptance Month!

APR 2022



Join Murray Ridge Center as we observe April as National Autism Acceptance Month!



### Two Great Ohio-Based Autism Resources:

**Ohio Center for Autism and Low Incidence: [ocali.org](http://ocali.org)**

- This Ohio organization offers educational internet modules and other resources for families, service providers, and individuals who want to better understand autism. Free for Ohio residents!
- Link to modules: [autisminternetmodules.org](http://autisminternetmodules.org)

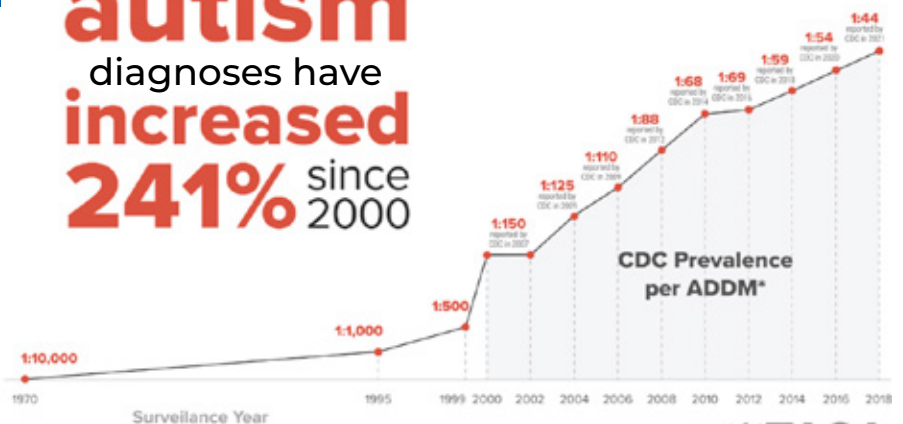
**Milestones Autism Resources: [milestones.org](http://milestones.org)**

- This East Cleveland organization provides educational tools for families and caregivers to help improve the lives of individuals with autism.

### Normalizing Neurodivergence

As of 2018, the CDC estimates that 1 in 44 children in the United States are diagnosed with autism. That's a roughly 22% increase from its 2016 estimate of 1 in 54. That increase correlates with improved methods of diagnosis. We're spotting autism traits faster, earlier, and more easily. Moreover, these figures show that autism is not a rare occurrence, but a normal and common part of our social reality. That's why autism acceptance and inclusion is so important: it's up to us to change and adapt our society to include people with autism.

## autism diagnoses have increased 241% since 2000



\*ADDM (Autism and Development Disabilities Monitoring Network)



# SPECIAL OLYMPICS AWARD BANQUET



**Congrats to  
all Special  
Olympians!**  
Enjoy these  
highlights!

## Honoring Our Winter 2019 - Winter 2022 Special Olympians

The 2022 Special Olympics Awards Banquet was held this past March 21st! More than 100 athletes were in attendance with their loved ones at the Spitzer Conference Center at Lorain County Community College, where they enjoyed a dinner prepared by the college's culinary arts program, a plethora of awards presentations, and more.



## Hall of Fame Inductees

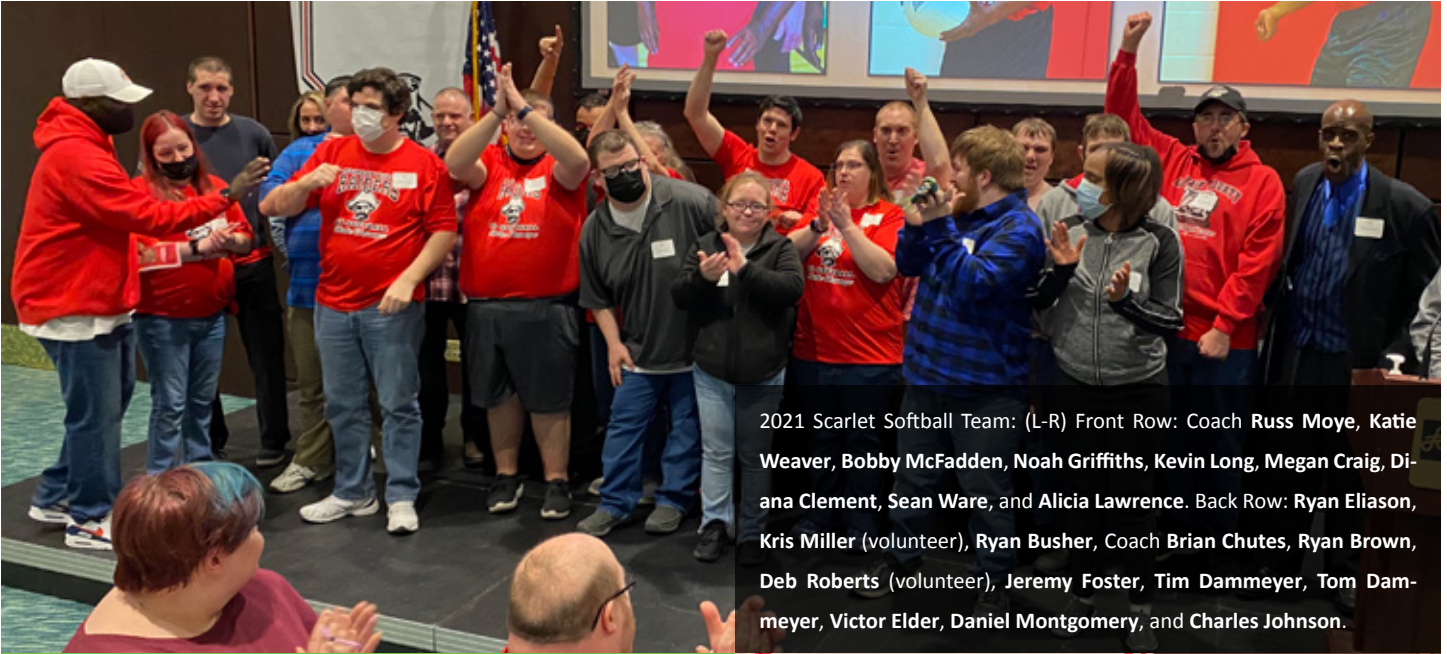
Congratulations to Kurt Carin and Leroy Davis, the most recent inductees to the Murray Ridge Center Special Olympics Hall of Fame!



## Jeremy Foster's Invocation

Jeremy Foster delivered a moving invocation before the banquet's audience of 168 attendees.





2021 Scarlet Softball Team: (L-R) Front Row: Coach Russ Moye, Katie Weaver, Bobby McFadden, Noah Griffiths, Kevin Long, Megan Craig, Diana Clement, Sean Ware, and Alicia Lawrence. Back Row: Ryan Eliason, Kris Miller (volunteer), Ryan Busher, Coach Brian Chutes, Ryan Brown, Deb Roberts (volunteer), Jeremy Foster, Tim Dammeyer, Tom Dammeyer, Victor Elder, Daniel Montgomery, and Charles Johnson.

## Banquet Recap:

In addition to congratulatory addresses from Special Olympics Coordinator **Shawn Hatcher** and Superintendent **Amber Fisher**, **Jeremy Foster** delivered a moving invocation. The keynote speaker at the event was **Kelly Gunther**, an Olympic speed skater with an inspiring story. Special recognition was given to **Kurt Carin** and **Leroy Davis**, the most recent Hall of Fame inductees, and the Murray Ridge Raiders Scarlet Team, the 2021 Softball State Champions. The ceremony also acknowledged community supporters, including **Casey Wolfe** at **Amherst City Schools**; **Amherst Athletic Association**; **Rebman Recreation, Inc.**; **Shoreway Sports & Graphics**; **Indian Hollow Lakes Golf Course**; and **Sliman's Sales & Service, Amherst**.



Shawn Hatcher presenting Olympic speed skater Kelly Gunther with a special plaque of recognition



Joseph Cechura receiving his medal from Board Member **Becky Cornman** while **Diana Clement** waits to get hers from Board Member **Catherine Leimbach** (left).



Charles Johnson with Board Member **Becky Cornman**

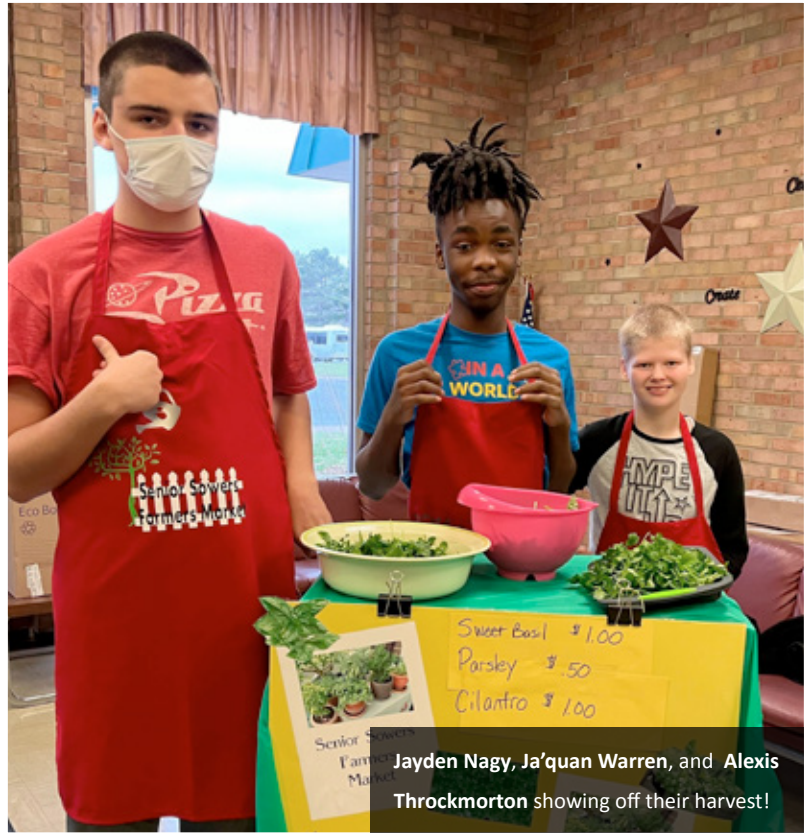
## Awards

All athletes who participated in Special Olympics activities from Winter 2019 through Winter 2022 were recognized and given a medal for their efforts!

# SCHOOL HIGHLIGHTS

## Senior Farmers' Market

The Senior Sowers Farmers' Market had its grand opening this past Friday at Murray Ridge School! Students in the Senior wing from **Kristin Dickerhoff's** class have been growing fresh organic herbs in their classroom under special grow lights, and today they were able to offer an array of fresh cilantro, fresh parsley, and fresh, sweet basil to sell to staff. The students will continue to harvest these wonderful herbs as they continue to grow and look forward to offering more fabulous, home-grown options.



Jayden Nagy, Ja'quan Warren, and Alexis Throckmorton showing off their harvest!



Girl Scout Diane Davis makes a sale!

## Girl Scout Cookie Season!

Girl Scout Troop 57730 has been out and about selling Girl Scout Cookies! The troop, organized by troop leaders **Julie Kraker** and **Cheryl Swierz**, is part of the Elyria Service Unit and is open to girls aged 12 and older. This year, the troop's focus is exploring other cultures by learning about the food, music, art and people from a variety of locations around the world!

# ADVOCACY WEDNESDAYS



Every Wednesday at 11AM, the Ohio Self-Determination Association (OSDA) and We Thrive Together hold an hour-long virtual meeting to discuss self-advocacy and awareness issues within Ohio's disability community. The discussions are very informative and are a valuable resource for our DD community! Some recent sessions included discussing assistive technology, learning how to make one's voice heard in local and state politics, and even a talk given by a published author who has autism. If you'd like to participate, be sure to tune in each Wednesday!

Zoom Link: <https://us02web.zoom.us/j/8010396858>

# MEGA CHAMPIONSHIP WRESTLING PRESENTS **LIVE PRO WRESTLING** **MEGA** WRESTLING

APRIL 30TH, 2022. SATURDAY

DOORS 6:00PM • BELL TIME 6:30PM



FRIENDS OF MURRAY  RIDGE FUNDRAISER

## **BREAKING DOWN BARRIERS**

**LOCATION:** LORAIN COUNTY COMMUNITY COLLEGE FIELDHOUSE  
1005 ABBE RD NORTH. ELYRIA, OH 44035

**GENERAL ADMISSION TICKETS \$10** FOR MURRAY RIDGE  
CONSUMERS, STAFF AND THEIR FAMILY IN ADVANCE.  
PURCHASE FROM THE FRONT DESK AT ANY OVC.

**[WWW.MEGACHAMPIONSHIPWRESTLING.COM](http://WWW.MEGACHAMPIONSHIPWRESTLING.COM)**



# Triumph Through The Challenges Fetal Alcohol Spectrum Disorder

## Who should attend?

This course series is for nurses, social workers, counselors, physicians, educators, parents, and caregivers who work with individuals that may have had prenatal exposure to alcohol/drugs.

## Virtual Zoom Meeting!

### 2022 Virtual Spring Series

#### Evening Sessions:

May 11, 2022: Section 1, 5-7:30 p.m.

May 12, 2022: Section 2, 5-7:30 p.m.

May 16, 2022: Section 3, 5-7:30 p.m.

May 18, 2022: Section 4, 5-7:30 p.m.

#### Registration Information:

Contact : Kathy Bevaque, M.Ed., D.S. w/LCBDD  
Agency mobile # (440) 731-0358  
e-mail: kbevaque@murrayridgecenter.org

#### Facilitators:

Kathleen Bevaque, M.Ed., D.S. w/LCBDD  
Angelique Yost, parent/former foster parent



MurrayRidgeCenter  
MURRAY RIDGE CENTER FOR RESEARCH & TRAINING

**Learn** about Fetal Alcohol Spectrum Disorder (FASD) and how to best work with those affected in order to help them to reach their fullest potentials.

**Gather** useful tips and local resources!

**Discover** ways to succeed!

## Series Details

- **Section 1:** FASD Basic Facts; Characteristics; Chronological vs. Developmental Age
- **Section 2:** Neurological Issues & Behaviors of FASD; Coping Skills
- **Section 3:** Developing Effective Strategies for FASD; Advocacy & Finding Resources
- **Section 4:** Advocacy in Schools: Behavioral Strategy: Daily Living & Future Planning for Individuals with FASD

**No fee to attend.**



#### Contact Hours Available

- Social workers, counselors, and chemical dependency RCH provided by the MHARS Board of Lorain County
- Developmental Disability hours provided by Lorain County Board of Developmental Disabilities, now including EI.
- Certificate of Attendance for contact hours

# Nominations Sought for Exceptional Service Awards

Do you know a Murray Ridge employee whose work efforts reflect remarkable dedication and have significantly contributed to the well-being of people with developmental disabilities? Nominate that employee for an Exceptional Service Award! If you are a community member; consumer; or parent, guardian, sibling or other relative of a Murray Ridge program participant, submit your nomination to Kevin Naughton, Community Education/Volunteer Director. Please include a brief paragraph outlining your reasons for nominating the employee. All nominations will be forwarded to the Board for consideration. The Board presents Exceptional Service Awards on a quarterly basis. If you have any questions, contact Kevin at (440) 329-3734 or kevin@murrayridgecenter.org



## Now Hiring!

# FEATURED positions



### Direct Support Professionals (Home Setting)

We have openings available for permanent and PRN (as-needed) positions to care for residents of our Meister Road Home. Hours vary based on position and/or assignment.

### Direct Support Professionals (Adult Program Setting)

We have openings available for PRN (as-needed) positions to care for participants in our Adult Program. Hours are generally during the day.

### Custodial/Maintenance Positions

We are looking for PRN (as-needed) custodial/maintenance help and two full-time Maintenance Technicians. Hours are generally during the day.

### Courier, PT

We have an opening available for a part-time courier in our business department. Hours are generally during the day.

### Secretary

We have an opening for a full-time secretary. Hours are generally during the day.

### We are looking for PRN (as-needed) Speech and Language Pathologists

### Service and Support Administrator (SSA)

We have openings for full-time Service and Support Administrators. Hours are generally during the day.

### SSA Data/Account Clerk

We are looking for a full-time SSA Data Clerk. Hours are generally during the day.

We provide the training.  
You provide the ♥

To see our current openings and to apply, go to the Murray Ridge website and click on "Opportunities"

All candidates:

Must have valid Ohio drivers license, good driving record, and High School Diploma/GED.  
Must pass background check, drug test, and physical.

Lorain County Board of  
Developmental Disabilities

Murray Ridge Center  
1091 Infirmary Road  
Elyria, OH 44035

Standard Presort  
U.S. Postage  
**PAID**  
Permit No. 146  
Elyria, OH 44035

**Photo of the Month:** Alicia Lawrence enjoying  
a morning skate at Lorain's Skate World!

## Contact Us

Phone :  
440.3293734

Address :  
1091 Infirmary Road  
Elyria, OH 44035

Web & Email :  
[www.murrayridgecenter.org](http://www.murrayridgecenter.org)  
[kevin@murrayridgecenter.org](mailto:kevin@murrayridgecenter.org)

Be sure to follow us on Facebook!

