

You Can Call Him "The Adaptor"



Murray Ridge consumer Ron Moss, left, and staff Keith Rawlinson.

His name is Keith Rawlinson, but you can call him "The Adaptor." And he's done it again! This Adaptive Equipment Specialist has now designed a way for individuals with developmental and physical disabilities to participate in activities otherwise inaccessible to them. In his 18 years at Murray Ridge Center,

it has been the job of Rawlinson to evaluate consumer's equipment needs and to then develop the tools necessary to meet those needs. Over the years, he estimates that he has created hundreds of pieces of adaptive equipment. Last year, for example, he created "Murray," a fully-functional robotic arm helper, able to assist consumers in performing such tasks as parts assembly, painting, or other similar activities requiring fine motor dexterity. Another piece he is particularly proud of was an electronic interface switch that he placed on the headrest of a wheelchair for an individual who has quadriplegia. This switch enabled the person to interface with sophisticated computerized document scanning software.

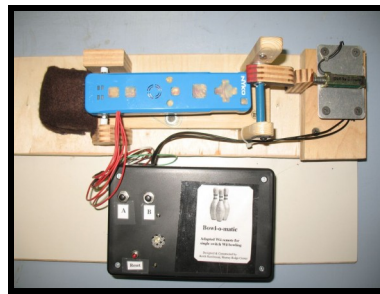
Recently, Rawlinson was presented with another challenge. Many consumers at the Oberlin Work/Activity Center enjoy participating in the very popular Wii Bowling during breaks or periods of low production. Some consumers who wanted to participate, however, found it difficult or impossible to do, given the limited use of their arms or legs. Observing this, Rawlinson set out to engineer a way for these individuals to participate in this activity alongside their peers.

Wii Bowling simulates bowling in both visuals and movement. A player stands in front of a television set connected to the



Rawlinson demonstrates how a typically-abled person uses a Wiimote.

Wii console, while holding and swinging the game's remote control, or "Wiimote." The player presses the Wiimote button once in order to line up the ball on the virtual alley. Then, as if holding a real bowling ball, the person holds the Wiimote button in again, swings his or her arms backward and forward, and releases the button when he or she is ready to release the "ball."



The adapted Wiimote.

would calculate the typical amount of time a person using it normally takes to swing the Wiimote during bowling. The program then translated this time and adapted it to the timing process when used by an individual with limited use of his or her arms. Since such a person cannot physically swing the Wiimote, the computer had to account for the timing of the swinging motion and then "release" the ball at the point that a typically-abled person would do so following the activation by an individual with limitations. Confusing? According to Rawlinson, this was the hardest part "I had to figure out how fast a human swings the Wiimote and when a human presses and releases buttons on the Wiimote while swinging it during bowling. As it turned out, I had to figure out how to squeeze everything the computer had to do into about 1/4 second of time."

Once Rawlinson's calculations were correct and could be downloaded into the Wiimote computer, he then needed to tackle the issue of the physical operation of the device. To accomplish a task such as this, Rawlinson implements what he refers to as the "Worst Case Design" method for problem solving. What this means is that he thinks about the person who will have the greatest challenges accomplishing a task and designs a tool that may be used successfully by that person. "Starting from that level of difficulty, it gets easier to adapt a tool for someone with fewer challenges," he explained.

“Adaptor...”

...Continued from page 1



Ron Moss demonstrates how the adapted Wiimote works.

With that approach in mind, he considered the challenges faced by consumer **Ron Moss**, who has quadriplegia. “Ron wanted to participate in Wii Bowling, but clearly can’t operate the Wiimote, so I began thinking about how I would need to make this activity available to him,” said Rawlinson. Since Moss is only able to move his head, Rawlinson decided to attach a head switch to the Wiimote with wires which would communicate to the Wiimote that the player was intending to activate the button. The Wiimote, itself, is held into place

While such an adaptation may not result in an individual becoming a champion bowler, this sort of innovation is what makes it possible for individuals with developmental and physical challenges to join in activities with their peers and to lead as independent lives as possible.



Clearly, Rawlinson’s adaptation to the Wiimote works, as Moss gets a strike on his first try.

First Female Murray Ridge Special Olympian Competes in Pentathlon at Summer Games

For the first time in Murray Ridge Center history, a female Special Olympian competed in the pentathlon at the Special Olympics Summer Games! In fact, 27-year-old **Alicia Lawrence** was the only **female** at the Summer Games to compete in the pentathlon! According to Special Olympics Ohio Program Director Martin Allen, Lawrence is the only female to have competed in the event during his nearly 30-year tenure with the organization. “This is the first time in my memory of 29 State Summer Games that we have had a female participate in the pentathlon, which is track & field’s most demanding event in Special Olympics,” he said.

Because she was the only one to compete in her division, she won the gold medal by default. However, according to her coach, **Trina Hutlock**, “Alicia definitely held her own in the event! She was out there competing right along with the guys, and did very well!” Lawrence, herself, said “I liked competing with the guys, although it would be fun to compete with other girls, too!”

The pentathlon is an extremely difficult event consisting of five separate track and field events over a two day period, including the high jump, the running long jump, the shotput, the 100 meter run and the 400 meter run. “Alicia is great at all of the events, although she finds the high jump to be a particular challenge,” said Hutlock. Lawrence agreed that the high jump



Murray Ridge pentathlete Alicia Lawrence proudly shows her gold medal.

was difficult. “That was really hard,” she said, “but I liked the throwing [shot put] a lot!” When asked if she plans to compete in the pentathlon next year, she looks at the gold medal in her left hand, smiles and says “Of course!”

Fun in Sheffield Lake



Staff and consumers enjoyed representing Murray Ridge Center once again at the Sheffield Lake Community Days Parade. Pictured Left to right: **Sam Hembree, Tracey Carroll, Racheal Seibert, Steve Tucker, Laura Gleason, James Peters, Scott McIver, Mary Van Alman, Patty Clickner and Shari Reitenbach.**

Support the Raiders!

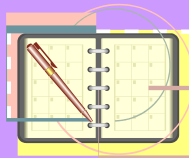
Come cheer for the Murray Ridge Raiders Softball Teams during another exciting season!

- **8/4/10**—Team 2 vs. Medina, 6:30 p.m., Blakesly Fields, Cnr of Fenn and Rt. 3
- **8/4/10**—Team 1 vs. Lake, Campana Park
- **8/5/10**—Team 2 vs. Huron, 6:00 p.m., Elyria Little League West Field
- **8/10/10**—Team 2 vs. Geauga, 6:00 p.m., Campana Park
- **8/12/10**—Team 1 vs. Erie, 6:00 p.m., Campana Park
- **8/17/10**—Team 1 vs. Stark, 6:15 p.m., Elyria Little League West Field
- **8/17/10**—Team 2 vs. Stark, 5:30 p.m., Southgate School, 3057 Cleveland Ave., Canton, OH 44707
- **8/18/10**—Team 2 vs. Medina, 6:00 p.m., Elyria Little League West Field

Possible game 8/19/10 against Wayne County. For more information, contact Gary Fisher at 284-2720.



Save the Date

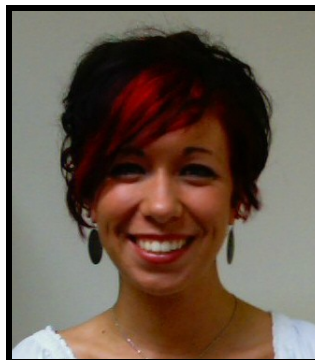


The 10th Annual Ohio Adult Sibling Conference will be held November 5-6 at the Marriott Airport Hotel. This annual conference is designed to give adult siblings of brothers and sisters with developmental disabilities an opportunity to share information, ideas and family experiences. This year's topics include Siblings as Care Providers in a Medicaid Environment, Siblings of People with Autism, Role of Siblings During Transition Periods, Understanding and Building the Sibling Relationship and Self-advocacy Activities for Siblings with a Disability.

The registration fee is \$85 and includes meals and materials. Registration can be completed online at www.ohiosibs.com, or you may fax your forms to Dr. Tom Fish at 614-292-3727 for more information.

For more information, contact Racheal Seibert at (440) 329-3734.

New Faces in Murray Ridge Places



Carolyn Kantosky joins the East Ninth Street home as a part-time Group Home Aide. Carolyn graduated from Midview High School and is currently studying psychology at Cleveland State University. Carolyn enjoys reading, working out, music, and spending time with friends



Joseph Neubauer joins Murray Ridge Center as the Information Systems Manager. Joe graduated from Tippecanoe High School and received his B.A. in Business Administration from Baldwin-Wallace College. He is a Microsoft Certified System Administrator and a Certified Public Accountant. Joe enjoys soccer, and resides in North Ridgeville with his wife.

Medication Notes



As a consumer, parent, guardian or care provider, you have many important rights which include informed consent. With respect to medical care, this means that the doctor should provide you with the necessary and appropriate information about your prognosis and recommended care so that you or the consumer can make an informed decision about your course of treatment. As discussed in the booklet [Patient Rights and Responsibilities](#). An [easy-to-read guide for people taking medicine](#), the following is a list of information the doctor should provide you with so that you or the consumer may make an informed decision:

- What is the diagnosis or cause of the medical issue?
- What are the treatment options?
- If treatment includes medications, what are the benefits of the medications?
- What are the risks or side effects of any recommended medications?
- What is the importance of taking the medications as prescribed?
- What is the importance of reporting side effects?
- What could happen without treatment?

Early Intervention Annual Picnic



School may be out for the summer, but the Early Intervention Program at Murray Ridge is in session year 'round. Did you know that in 2009 our Early Intervention programs served more than 600 children ages birth to three years who had or were at risk for developmental disabilities? To celebrate the efforts and achievements of the youngsters in our program, the School is inviting current participants as well as alumni of our Early Intervention Program to the picnic. The event will be held on August 12 from 11 a.m. to 1 p.m. at Murray Ridge School. Attendees will enjoy tasty treats, delight in the antics of a clown, and explore their creative sides through sidewalk chalk, music, and crafts. For more information call 284-3655.

Don't Forget...

**Come see us at the
Lorain County Fair
August 23-29 in
building 19!**









BOARD ROOM BRIEFING

The Lorain County Board of DD convened at 12:30 p.m. on July 30, 2010:



Superintendent Amber Fisher recommended and the Board approved a revision to the policy on the Handling of Consumer Incidences Adversely Affecting Health and Safety, as it relates to Board-operated homes. Director of Residential SSA, Al Sprague, then updated the Board on the construction of a new Murray Ridge Housing Corporation home on Academy Court. The home will be a fully-accessible duplex which will provide a good option for emergency placement; it is anticipated that 90% of construction costs will be covered by state capital assistance funds. Following this update, Dann Swift, Director of Education, recommended that the Board approve the annual agreement with Help Me Grow, which addresses the transition of children from Part C services (Early Intervention) to Part B (Preschool). The Board unanimously approved the agreement. Dr. Fisher then requested that the Board approve a change in the title of the Director of Vocational Services to Director of Vocational/Transportation Services. The Board unanimously approved the change. In other business, Superintendent Fisher reported to the Board that for Fiscal Year 2010, \$710,000 in state waiver allocation was withdrawn. However, for FY 2011, the state reinstated \$417,000. Dr. Fisher further reported that the enhanced Federal Medicaid Assistance Percentage (FMAP), which is significantly beneficial for Board finances, is still scheduled to end as of 12/31/10. On another note, Superintendent Fisher informed the Board that Erie County Board of DD has referred to Murray Ridge Adult Services a consumer on the border of Erie and Lorain Counties. Erie County will continue to write the individual's plan, but will pay LCBDD 100% of the cost for the services provided. Dr. Fisher recommend approval of the contract with Erie County and the Board approved it unanimously. Dr. Fisher then addressed the upcoming Strategic Planning process. Finally, Dr. Fisher reported to the Board that the OACB Delegate Assembly has two Trustee openings for which LCBDD members are eligible. She further reminded the Board that the Delegate Assembly will be held December 1, 2010.

August 2010

Sun	Mon	Tue	Wed	Thu	Fri	Sat
1	2	3	4	5	6	7
8	9	10	11	12 	13	14
15 	16	17	18	19 	20	21 
22	23	24	25 	26 	27 	28
LORAIN COUNTY FAIR AUGUST 23-29!						
29	30	31				

Activities & Events

8/12—Early Intervention Playgroup, 5:30—6:30 p.m., Murray Ridge School, 9750 Murray Ridge Road in Elyria

8/15—North Ridgeville Corn Festival Parade

8/19—LCBDD Finance Committee meeting, 12:00 p.m., Administration Bldg., 1091 Infirmary Road, Elyria

8/21—Special Olympics Area Softball Tournament, Genshaft Park, 2801 East Erie Street, Massillon, OH 44646, Time TBA

8/23-29—Lorain County Fair—Come see us in Building 19!

8/25—First Day of School for Staff

8/26—First Day of School for Murray Ridge Students; Preschool Begins 9/7/10

8/26—Early Intervention Playgroup, 5:30—6:30 p.m., Murray Ridge School, 9750 Murray Ridge Road in Elyria

8/27—LCBDD Meeting, 12:30 p.m., Administration Bldg., 1091 Infirmary Road in Elyria

NOTE: The Preschool Open House will be held September 1st.



Lunch Menus

Cost Per Day: Youth = \$2.80, Adults = \$2.80

—
August 16-20
September 6-10

Monday- Salisbury Steak w/Gravy, Scaloped Potatoes, Corn, Peaches, Cookie

Tuesday- Ham & Cheese on Wheat Bread, Peas & Carrots, Pears, Nutri-Grain Bar

Wednesday- Meat Lasagna, Green Beans, Tossed Salad w/Low fat Dressing, Wheat Bread, Cookie

Thursday- Pepperoni & Cheese Pizza, Tossed Salad w/Low fat Dressing, Banana, Nutri-Grain Bar

Friday- Fish Patty, French Fries, Cole Slaw, Apple Slices, Wheat Bread, Cookie

August 2-6
August 23-27
September 13-17

Monday- Ham, Wheat Bread, Rice Pilaf, Diced Carrots w/Herbs, Applesauce

Tuesday- Hamburger on a Bun, Potato Wedges, Corn, Crushed Pineapple, Cookie

Wednesday- Chicken Patty w/Gravy, Au Gratin Potatoes, Green Beans, Fruit, Wheat Bread, Cookie

Thursday- Pepperoni & Cheese Pizza, Tossed Salad w/Low fat Dressing, Banana, Nutri-Grain Bar

Friday- Macaroni & Cheese, Cooked Carrots, Diced Pears, Cookie



August 9-13
August 30-September 3
September 20-24

Monday- Chicken Patty on a Bun, Potato Rounds, Corn, Crushed Pineapple, Cookie

Tuesday- Meat Lasagna, Tossed Salad w/Low fat Dressing, Diced Peaches, Nutri-Grain Bar

Wednesday- Rigatoni w/Meatballs, Green Beans, Tossed Salad w/Low fat Dressing, Wheat Bread, Cookie

Thursday- Pepperoni & Cheese Pizza, Tossed Salad w/Low fat Dressing, Fresh Fruit, Nutri-Grain Bar

Friday- Meat/Cheese Burrito, Spanish Rice, Cole Slaw, Applesauce

Lorain County Board of
Developmental Disabilities

Murray Ridge Center
1091 Infirmary Road
Elyria, OH 44035

Standard Presort
U.S. Postage
PAID
Permit No. 146
Elyria, OH 44035

Visit our Web site
www.murrayridgecenter.org



If you have a news item that you would like to include in the Murray Ridge Courier, please email relevant photos, stories or event information to Racheal Seibert at rseibert@murrayridgecenter.org.

Submissions are due by the 20th of each month for the following month's newsletter.

Fetal Alcohol Syndrome Classes

"Triumph Through the Challenges of Fetal Alcohol Spectrum Disorder"

Learn about Fetal Alcohol Spectrum Disorders (FASD) and how to best work with those affected in order to help them reach their fullest potential.

This course is for caregivers and those who work with individuals that may have had prenatal exposure to alcohol or drugs.

Sessions are free and are offered from 6:00-9:00 p.m. on:

- **September 7**
- **September 14**
- **September 21**
- **September 28**

For more information visit www.loraincountyhealth.com/fasdcourse or call the Lorain County General Health District at 322-6367.



Further News You Might Use...

We are often in receipt of information from external sources on offerings designed for people with DD. Some examples include summer camps and special interest classes. Many such offerings have an associated cost to the participant. Although we are not in a position to "vouch for" or promote such offerings, we recognize that these opportunities may be of interest to our consumers, their families and/or guardians. If you are interested in learning more about such consumer-oriented events and opportunities, please contact Albert Sprague, Director of Residential Service & Support Administration. You may reach him by telephone at 440-324-2366.